

**RICOH**

# RICOH Ri1000

## Option Platen

## User Guide

For Hat Platen/Shoe Platen/Sleeve Platen



**Original instructions**

# TABLE OF CONTENTS

<b>TABLE OF CONTENTS .....</b>	<b>2</b>
<b>How to Read the Manuals .....</b>	<b>3</b>
Before You Begin.....	3
Disclaimer .....	3
Notes.....	3
<b>1. Printing Method.....</b>	<b>4</b>
1.1. Setup Printer .....	4
1.2. Printing method for RIP.....	4
<b>2. Appendix.....</b>	<b>9</b>
2.1. Revision history.....	9

# How to Read the Manuals

## Before You Begin...

Only appropriately trained users should operate the machine.

## Disclaimer

Contents of this manual are subject to change without prior notice.

To the maximum extent permitted by applicable laws, in no event will the manufacturer be liable for any damages whatsoever arising out of failures of this machine, losses of the registered data, or the use or non-use of this machine and operation manuals provided with it.

Make sure that you always copy or have backups of the data registered in this machine. Documents or data might be erased due to your operational errors or malfunctions of the machine.

In no event will the manufacturer be responsible for any documents created by you using this machine or any results from the data executed by you.

## Notes

Read this manual carefully before you use the machine and keep it handy for future reference.

For safe and correct use, be sure to read Safety Information before using the machine.

The manufacturer will not be responsible for any damage or expense that might result from the use of parts other than genuine parts from the manufacturer with your products.

For good output quality, the manufacturer recommends that you use genuine ink from the manufacturer.

Some illustrations in this manual may be slightly different from the machine.

Certain options may not be available in some countries. For details, please contact your local dealer. Depending on which country you are in, certain units may be optional. For details, please contact your local dealer.


# 1. Printing Method

## 1.1. Setup Printer

Refer to Ricoh Ri series Direct to Garment Printer Platen Manual.

## 1.2. Printing method for RIP

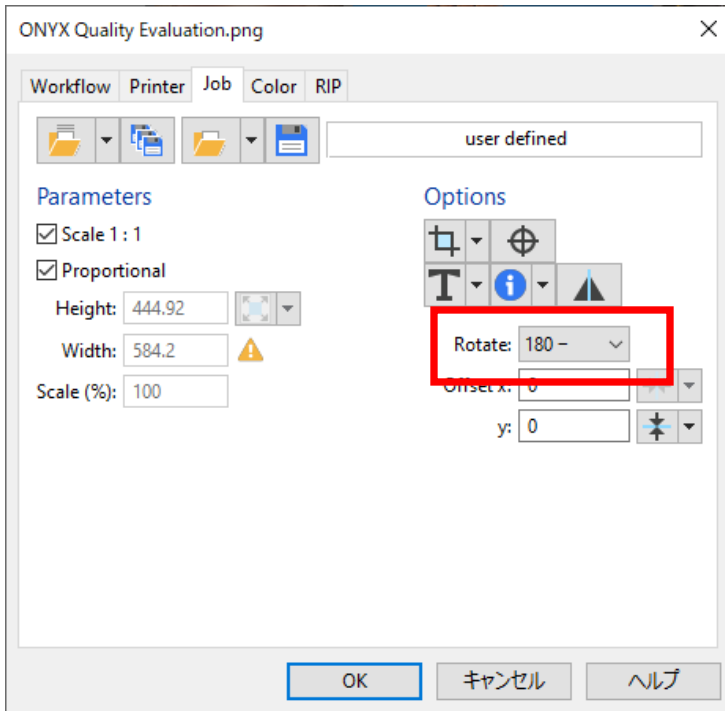
1. Start Productionserver or AnaRIP.
2. Input the image to RIP.
3. Please set with RIP according to the platen type.

Platen type	Productionserver	AnaRIP
Hat	a) User select Media size  <b>CAUTION</b> (*1)	a) User select Platen size
Sleeve	a) User select Media size	a) User select Platen size
Shoe	a) User select Media size b1) User set Offset/Scaling (for Productionserver)	a) User select Platen size b2) User set Offset/Scaling (for AnaRIP)

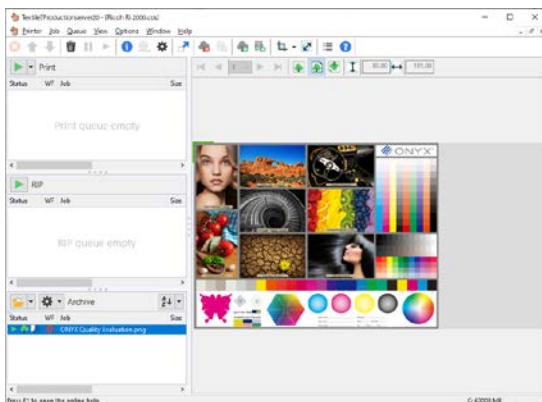
(CAUTION \*1)

The image is printed 180 degrees inverted from the display on the Productionserver.  
In that case, the user should set 180 degrees.

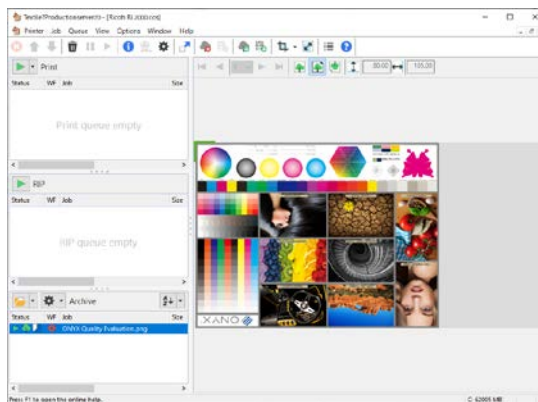
The print settings are below.



Default Settings:



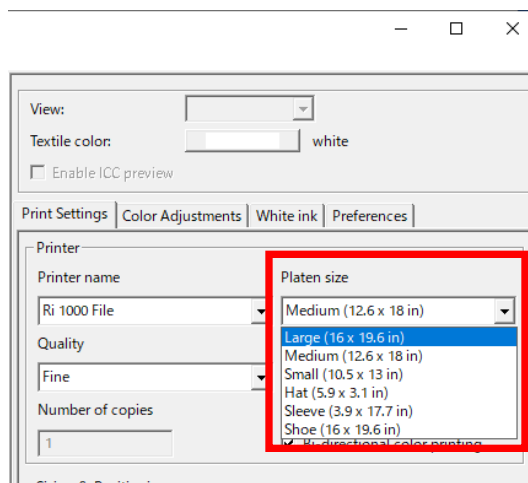
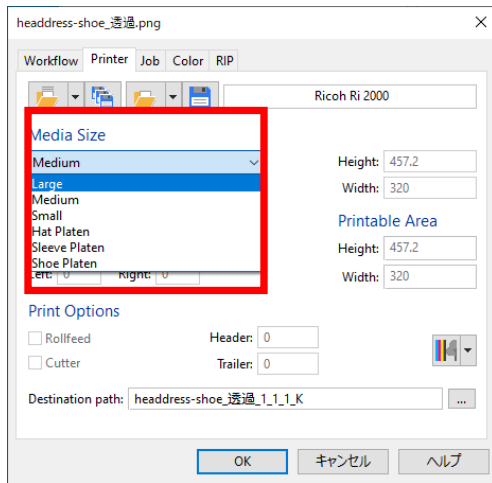
After Set Rotate(180 degree)



a) User select Media size/Platen size.

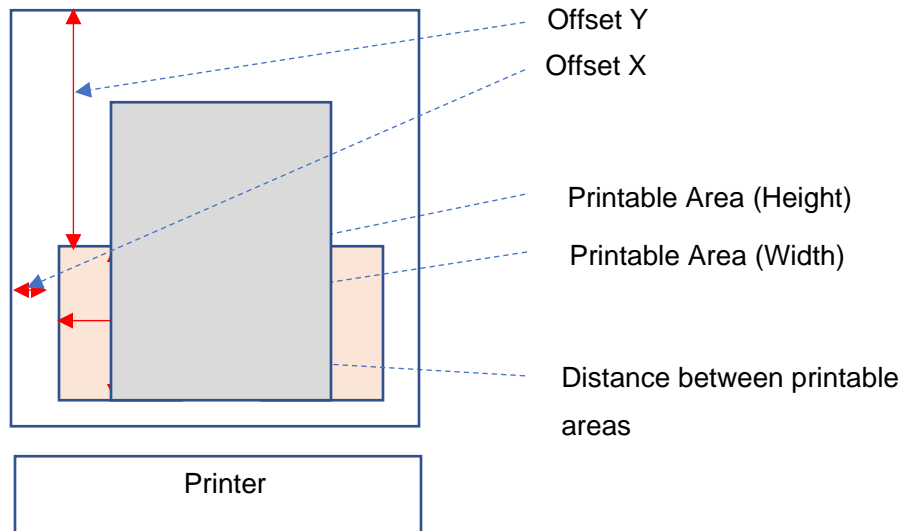
**Productionserver:**

**AnaRIP:**

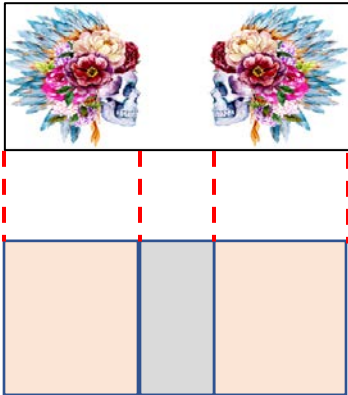


b1) User set Offset/Scaling (for Productionserver)

According to type of Shoe Attachment, user set Height x Width, Offset x, y.



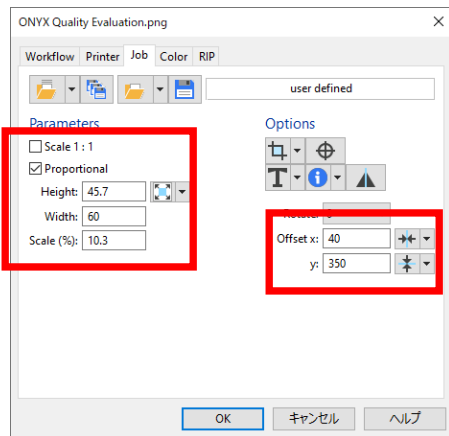
If you want to print on both feet, please prepare the following image and set Offset x,y.



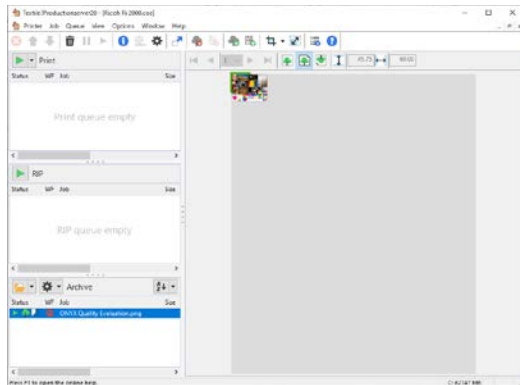
**Offset of each Shoe attachment**

Shoe Attachment	Offset	(Reference) Printable Area(Width x Height)	(Reference) Distance between printable areas
Small	X:20 Y:220	85 x 150 mm	205 mm
Medium	X:40 Y:360	50 x 50 mm	40 mm
Large	X:40 Y:350	60 x 60 mm	40 mm

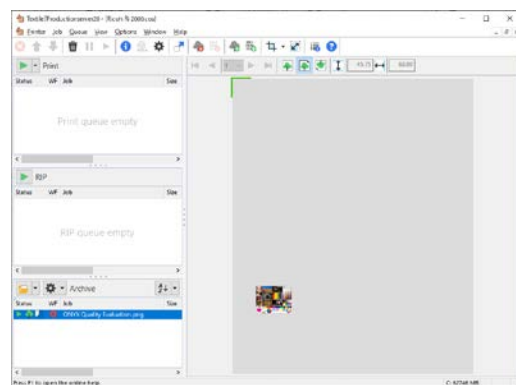
**Setting method of Productionserver:**



Default Settings:

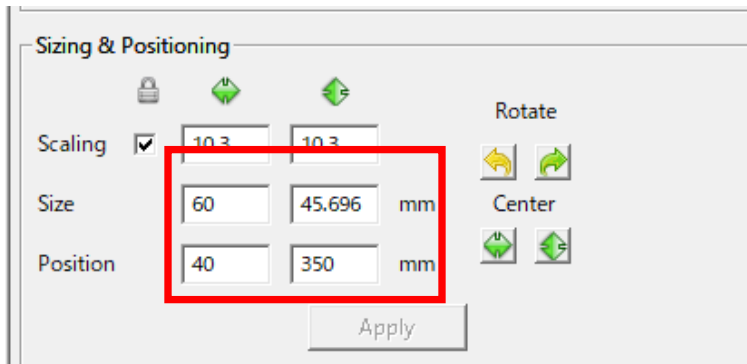


After Set Offset(X =40, Y=350)

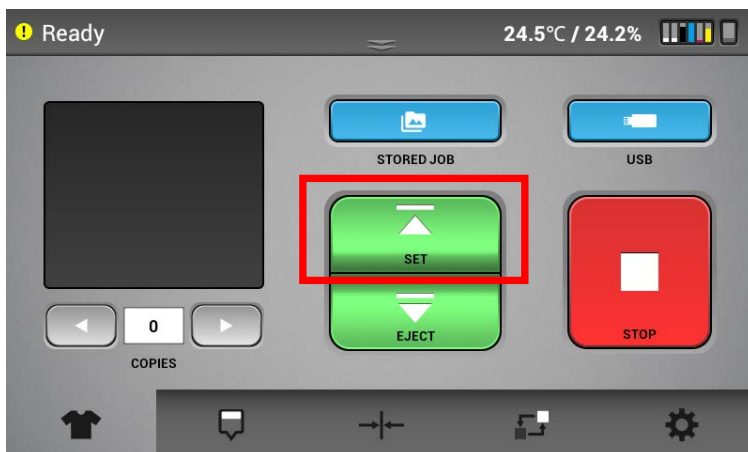


b2) User set Offset/Scaling (for AnaRIP)

Install a transparent mesh lid on the platen, set the appropriate position and size based on the confirmed values, and print.



4. User print image in Productionserver or AnaRIP.
5. Please lower the height according to the option platen. If you do not lower the height, the platen may hit the printer body.
6. Press the Set button on the printer panel.





## 2. Appendix

### 2.1. Revision history

Revision	Date issued	Description
Initial version	Nov, 2020	